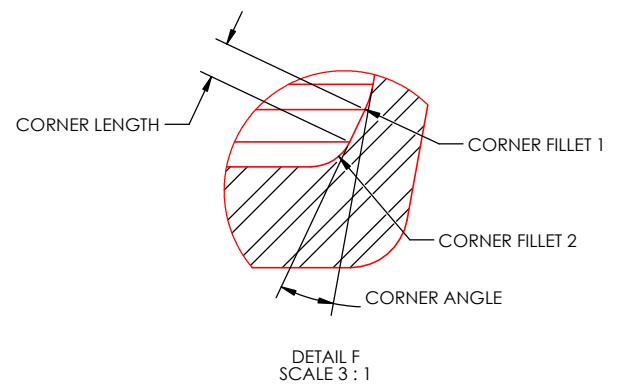
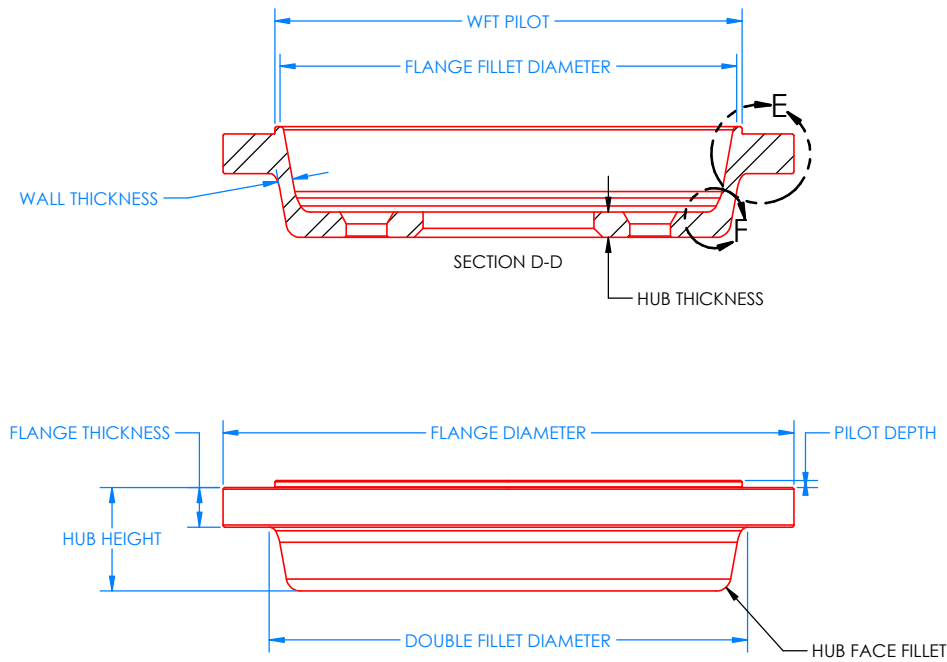
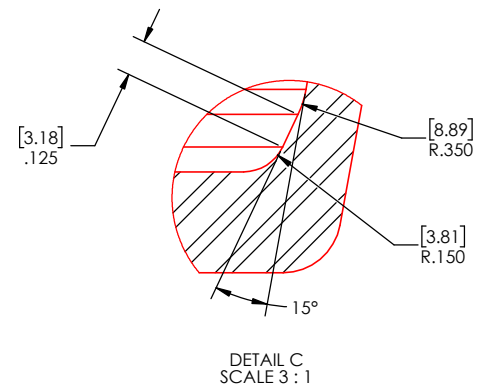
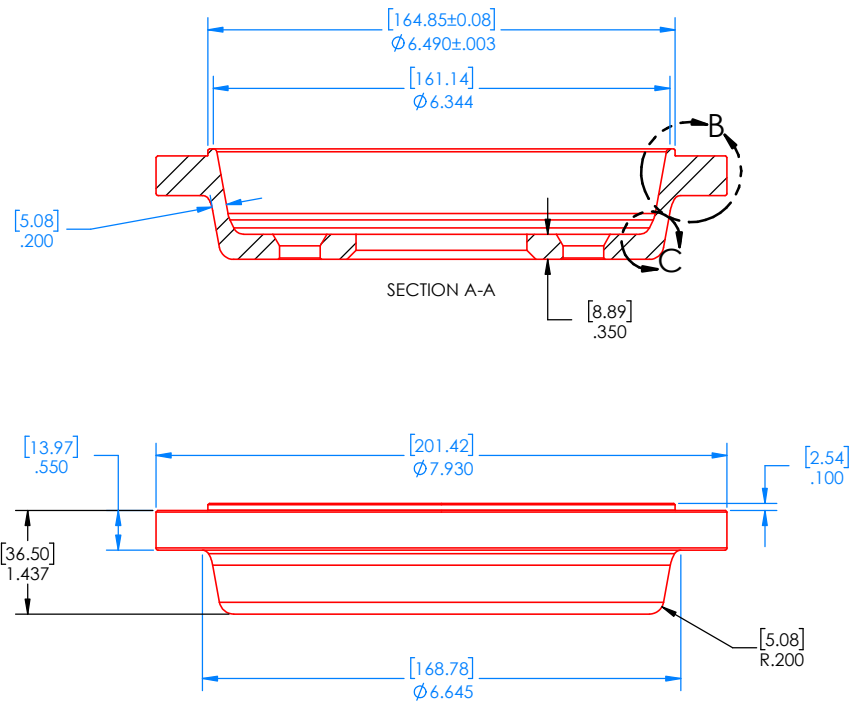
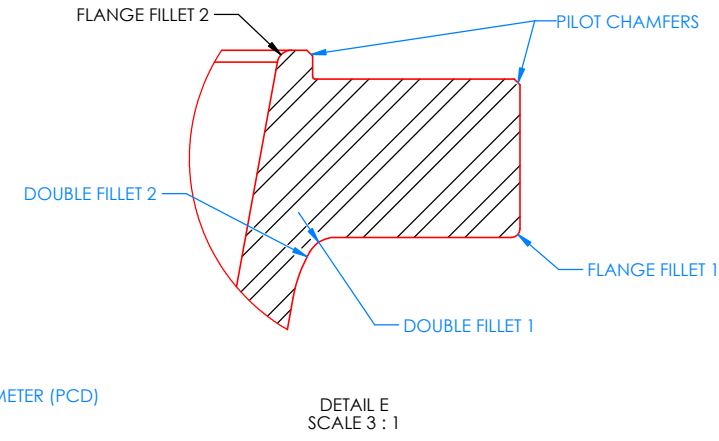
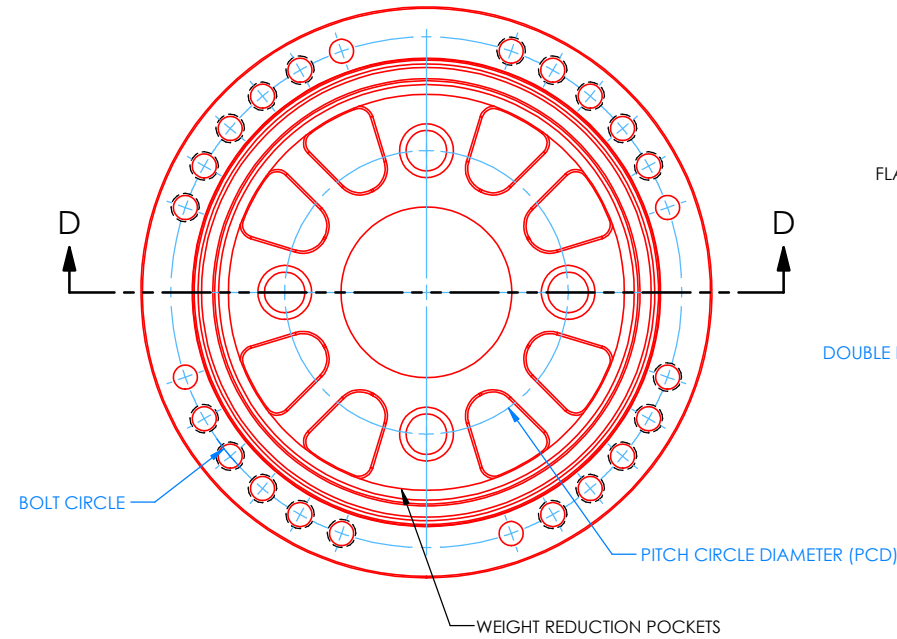
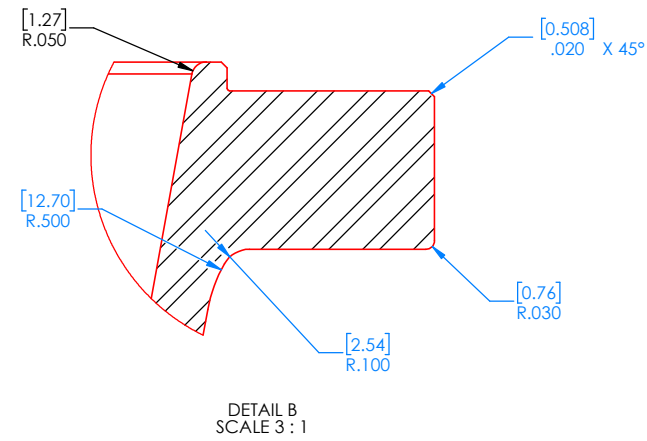
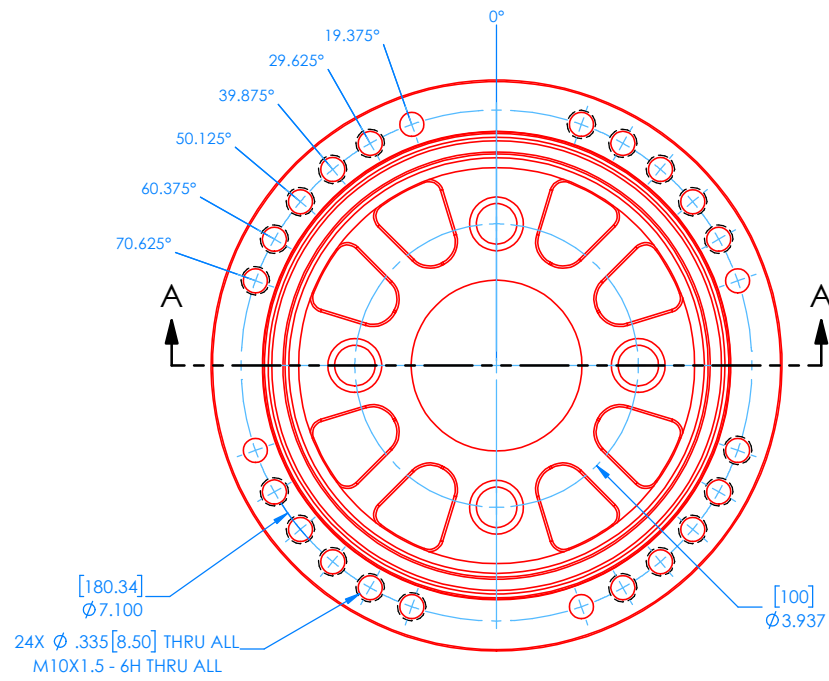


LW9.5-HS Hub Adapter Design Guide

Note: Blue Dimensions are CRITICAL and CANNOT change. Black Dimensions can change.



It is essential that the adapters match the recommended guidelines. This will ensure system can withstand the rated loads and provide the most accurate results. The critical features are shown in blue. Customers may change all other geometry. Examples of permitted changes are shown on the second sheet.

The "HUB THICKNESS" should not be less than 0.350 in (8.890 mm).

Detail C shows geometry that reduces the material stresses to increase the adapter fatigue life. The "CORNER ANGLE" should be between 15-25 degrees.

"WEIGHT REDUCTION POCKETS" can be added. Michigan Scientific Corporation (MSC) typically uses FEA to validate the specific pocket design.

MSC machines hub adapters from 17-4 H1 100 stainless steel. This material provides good insulation from brake heat. Alloy steels can be used but they will conduct brake heat more than the stainless steel. The material should have a yield strength of at least 931 MPa (135 ksi) and a hardness between 32 and 45 HRC.

MSC verifies all rim and hub adapter assemblies using FEA to simulate the SAE J328 wheel durability standard. This should be done with all adapter systems to verify the load ratings and fatigue life of the adapters. A LW9.5-HS transducer has a SAE J328 static load rating of 4,200 lb (1905 kg). This should never be exceeded.

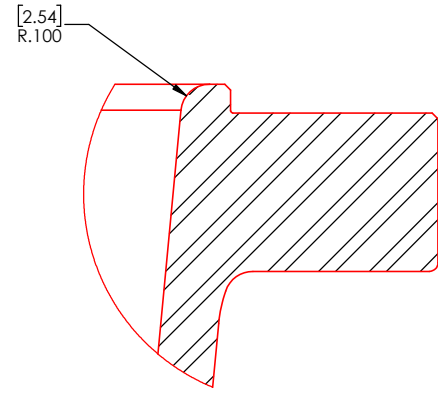
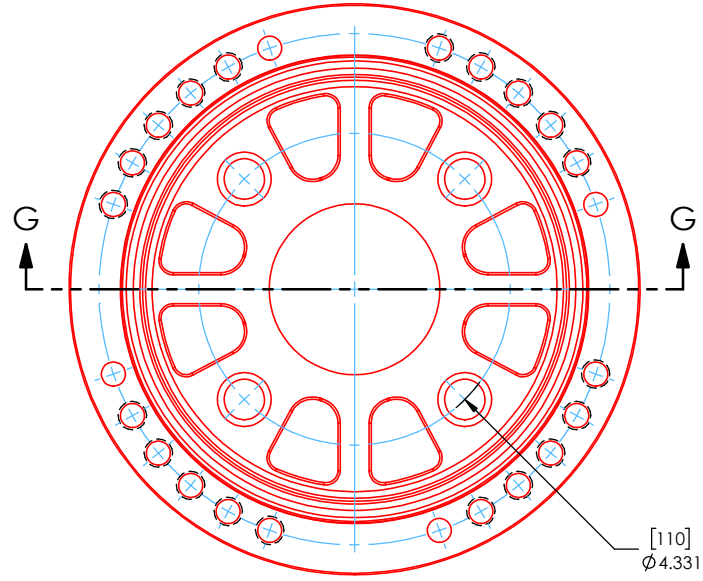
MSC can check your adapter designs at no cost. Contact MSC online at michsci.com/contact-us or via phone at 1-231-547-5511.

Details and specifications provided in this document are purely for informational purposes and are subject to alterations. No liability is accepted for errors or omissions. ©2023 Michigan Scientific Corporation

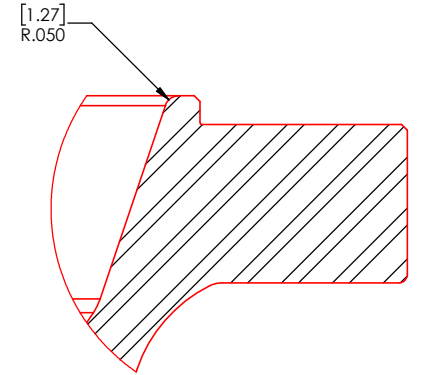
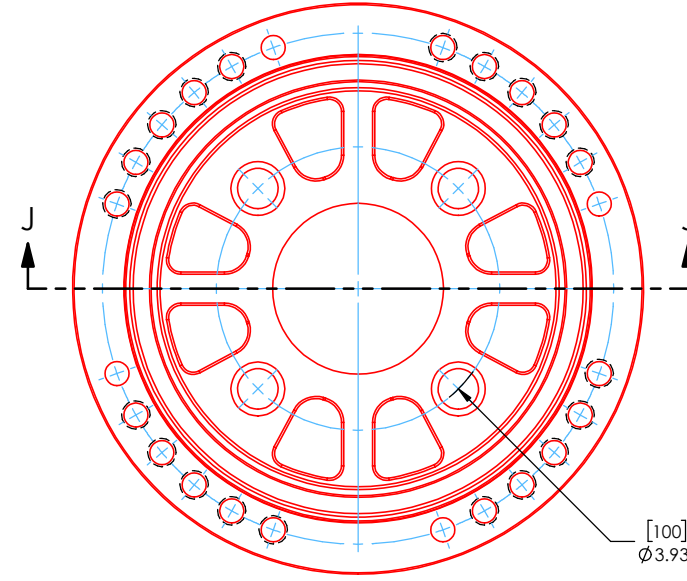
UNLESS OTHERWISE SPECIFIED:		DATE	NAME	MICHIGAN SCIENTIFIC CORPORATION 8500 ANCE ROAD CHARLEVOIX, MICHIGAN 49720 www.michsci.com
DIMENSIONS ARE IN INCHES		11/20/23	J.P. BAILEY	
TOLERANCES:	XXX ±.0010	DESIGNED	11/27/23	PROJECT LINE N/A
XXX ±.005		CHECKED	11/27/23	
XX ±.01		ENG APPR	11/27/23	CUSTOMER CODE MSC
FRACTIONAL ±		MFG APPR	11/27/23	PROJECT CODE LW9.5-HUB ADAPTER 1
ANGULAR: MACH ±				DESCRIPTION LW9.5-HS Hub Adapter
BEND ±				SIZE D
WELD				REV A
MATERIAL	PROPERTY AND CONFIDENTIAL			SCALE: 3:4
FINISH	THE INFORMATION CONTAINED IN THIS DRAWING IS THE SOLE PROPERTY OF MICHIGAN SCIENTIFIC CORPORATION. ANY REPRODUCTION IN PART OR AS A WHOLE WITHOUT THE WRITTEN PERMISSION OF MICHIGAN SCIENTIFIC CORPORATION IS PROHIBITED.			SHEET 1 OF 2

LW9.5-HS Hub Adapter Design Guide

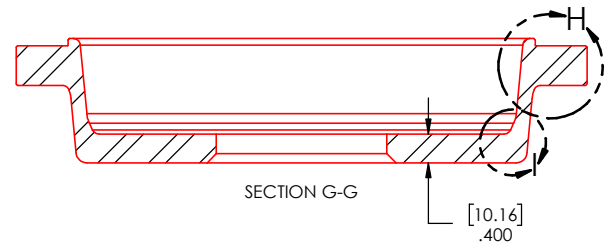
Note: Blue Dimensions are CRITICAL and CANNOT change. Black Dimensions can change.



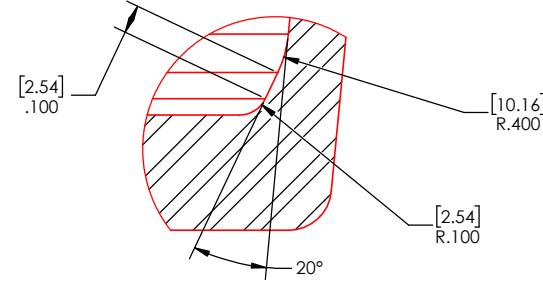
DETAIL H
SCALE 3 : 1



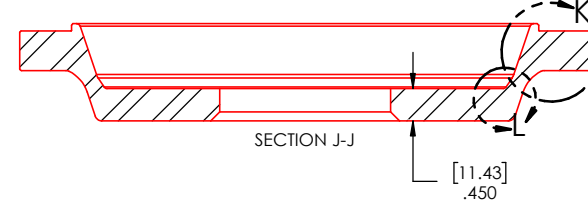
DETAIL K
SCALE 3 : 1



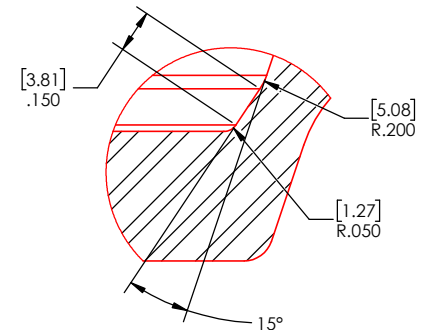
SECTION G-G



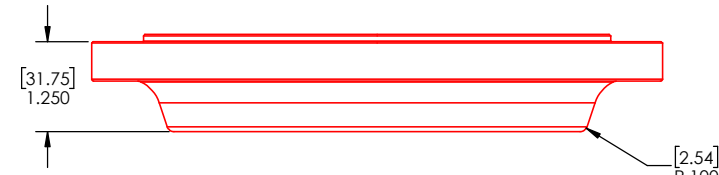
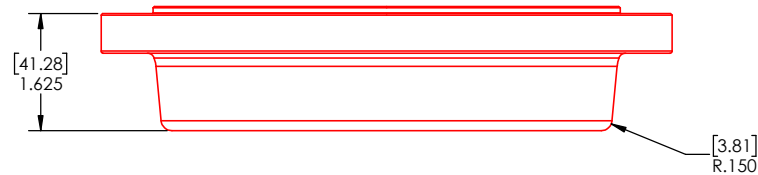
DETAIL I
SCALE 3 : 1



SECTION J-J



DETAIL L
SCALE 3 : 1



It is essential that the adapters match the recommended guidelines. This will ensure system can withstand the rated loads and provide the most accurate results. The critical features are shown in blue. Customers may change all other geometry. Examples of permitted changes are shown above.

Details and specifications provided in this document are purely for informational purposes and are subject to alterations. No liability is accepted for errors or omissions. ©2023 Michigan Scientific Corporation

UNLESS OTHERWISE SPECIFIED:		DATE	NAME	MICHIGAN SCIENTIFIC CORPORATION 8500 ANCE ROAD CHARLEVOIX, MICHIGAN 49720 www.michsci.com	
DIMENSIONS ARE IN INCHES	DRAWN	11/22/23	JPSALEY	PRODUCT LINE	N/A
TOLERANCES:	DESIGNED	11/22/23	JPSALEY	CUSTOMER CODE	PROJECT CODE
XXX ±.005	CHECKED	11/22/23	JPSALEY	MSC	1 WFT
XX ±.01	ENG APPR	11/22/23	JPSALEY	DESCRIPTION	LW9.5-HUB ADAPTER 1
XX ±.01	MFG APPR	11/22/23	JPSALEY	SIZE	DWG. NO.
ANGULAR: MACH				D	LW9.5-HS Hub Adapter
REQD				SCALE: 3:4	Design Guide
MATERIAL	PROPERTY AND CONFIDENTIAL		THE INFORMATION CONTAINED IN THIS DRAWING IS THE SOLE PROPERTY OF MICHIGAN SCIENTIFIC CORPORATION. ANY REPRODUCTION IN PART OR AS A WHOLE WITHOUT THE WRITTEN PERMISSION OF MICHIGAN SCIENTIFIC CORPORATION IS PROHIBITED.		REV
FINISH					A
SEE NOTE					SHEET 2 OF 2